

# Installation Manual

**A-3329  
ARNOTT  
REAR RIGHT AIR SPRING  
MERCEDES-BENZ C-CLASS (W205)  
W-W/OUT 4MATIC, INCL AMG (EXCL C350E)**



Congratulations on your purchase of an Arnott® air suspension product. We at Arnott Incorporated are proud to offer a high quality product at the industry's most competitive pricing. Thank you for your confidence in us and our product.

Proper installation is essential to experience and appreciate the benefits of this system. Please take a moment to review these installation instructions before you begin to install these components on your vehicle. The removal and installation of air suspension products should only be performed by a fully qualified, ASE Certified, professional.

It is equally important to be aware of all necessary safety measures while installing your new Air Suspension System. This includes proper lifting and immobilizing of the vehicle and isolation of any stored energy to prevent personal injury or property damage.

## "Engineered to Ride, Built to Last®"



**WARNING:** *The air suspension system is under pressure (up to 10 bar, or 150 lbf/in). Verify pressure has been relieved and disconnect power to the air suspension system prior to disassembly. Do not allow dirt or grease to enter the system. Always wear standard hand, ear, and eye protection when servicing the air suspension system.*

Arnott® is committed to the quality of its products. If you have a question or problem with any Arnott product, please contact Arnott by calling **800-251-8993** during normal business hours or email [techassistance@arnottinc.com](mailto:techassistance@arnottinc.com). (In the EU please call +31 (0)73 7850 580 or email [info@arnotteurope.com](mailto:info@arnotteurope.com))

## GENERAL INFORMATION:

*Reading this manual signifies your agreement to the terms of the general release, waiver of liability, and hold harmless agreement, the full text of which is available at [www.arnottinc.com](http://www.arnottinc.com).*

- Not to be stored below 5°F (-15°C) or above 122°F (50°C).
- Avoid damage to air lines and cables.
- Removal and installation is only to be performed by fully qualified personnel.
- Use car manufacturer's diagnostic software.

**CAUTION:** *Damage to the vehicle and air suspension system can be incurred if work is carried out in a manner other than specified in the instructions or in a different sequence.*



*To avoid the possibility of short circuits while working with electric components consult your owner's manual on how to disconnect your battery.*



*Consult your vehicle owner's manual, service manual, or car dealer for the correct jacking points on your vehicle and for additional care, safety and maintenance instructions. Under no circumstances should any work be completed underneath the vehicle if it is not adequately supported, as serious injuries and death can occur.*



*This vehicle contains a "Closed Air Supply System". Replacement of components requires proper adherence to procedures set forth within OE servicing literature. Failure to comply with the OE prescribed procedures can result in component damage and/or failure.*

## AIR SPRING REMOVAL

1. SET STEERING TO STRAIGHT AHEAD.
2. RAISE VEHICLE AND REMOVE APPLICABLE REAR WHEEL. (FIGURE 1)



FIGURE 1

3. DEFLATE THE AIR SPRING USING THE DIAGNOSTIC TOOL.

4. DISCONNECT THE AIR LINE AND REMOVE THE AIR LINE FITTING. (FIGURES 2, 3, 4)

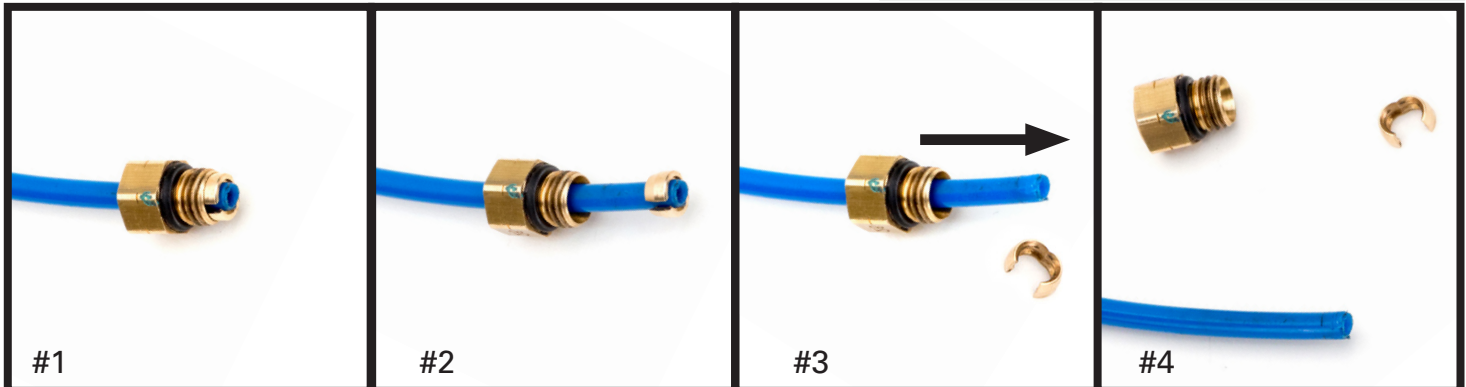


FIGURE 2



FIGURE 3

**NOTE:** SCRATCHES AND/OR DEEP CUTS IN THE AIR LINE CAN RESULT IN POSSIBLE LEAKS. INSPECT THE AIR LINE BEFORE INSERTION. AIR LINE NEEDS TO BE REPLACED IF DAMAGED.



#1 OE AIR LINE FITTING.

#2 SLIDE THE THREADED PORTION UP THE LINE AND SPREAD THE COLLET OPEN TO REMOVE.

#3 SLIDE THE AIR FITTING OFF OF THE AIR LINE.

#4 AIR LINE IS READY FOR INSTALLATION.

FIGURE 4

5. REMOVE THE PLASTIC TRIM UNDERNEATH THE BOTTOM OF THE AIR SPRING. (FIGURES 5, 6)



FIGURE 5



FIGURE 6

6. REMOVE THE AIR SPRING FROM THE VEHICLE. (FIGURE 7)






FIGURE 7

7. REMOVAL COMPLETE.



## AIR SPRING INSTALLATION

-  *Tighten all nuts and bolts to manufacturer's specifications during the installation process.*
-  *Install air line into new air line fitting until fully secure.*
-  *Damage to the vehicle and air suspension system can be incurred if work is carried out in a manner other than specified in the instructions or in a different sequence.*

1. INSTALL THE AIR SPRING INTO THE VEHICLE AND ENSURE THAT THE TOP OF THE AIR SPRING LOCKS SECURELY INTO THE MOUNT CLIP. (FIGURES 8, 9)



FIGURE 8



FIGURE 9

2. INSTALL THE AIR LINE INTO THE AIR SPRING FITTING BY INSERTING THE AIR LINE INTO THE FITTING FIRMLY UNTIL IT STOPS. (FIGURE 10)



FIGURE 10

3. ENSURE THE AIR SPRING IS PROPERLY AND SECURELY SEATED. (FIGURE 11)



FIGURE 11

4. INFLATE THE AIR SPRING USING THE DIAGNOSTIC TOOL.
5. REINSTALL THE APPLICABLE WHEEL.
6. LOWER THE VEHICLE.
7. AIR SPRING INSTALLATION COMPLETE.